

Bulletin Number: CO_IB_2.13.2025_Enhancements for Cultivation	Distribution Date: 02/13/2025	Effective Date: 02/12/2025
Contact Point: Metric Support	Subject: New Cultivation Enhancements	
Reason: To inform and provide an update regarding system enhancements for Cultivators.		

Greetings,

To further streamline workflow processes and reduce manual entry errors for Cultivations, the following functionality enhancements are now available in the Metric system.

- Improved Immature Plants functionality
- Auto-fill Strain field for Plantings
- View and restore plants within Harvest Details

Please read on for more information on how these new enhancements will drive improved accuracy and efficiency.

Improved Immature Plants Functionality

Create Plantings:

For selections where strain data is missing when selecting multiple plant batches, the strain will auto-populate in the Create Plantings action window. Users retain the flexibility to override the auto-populated strain as needed, enhancing control and customization – see **Figure 1 below**.

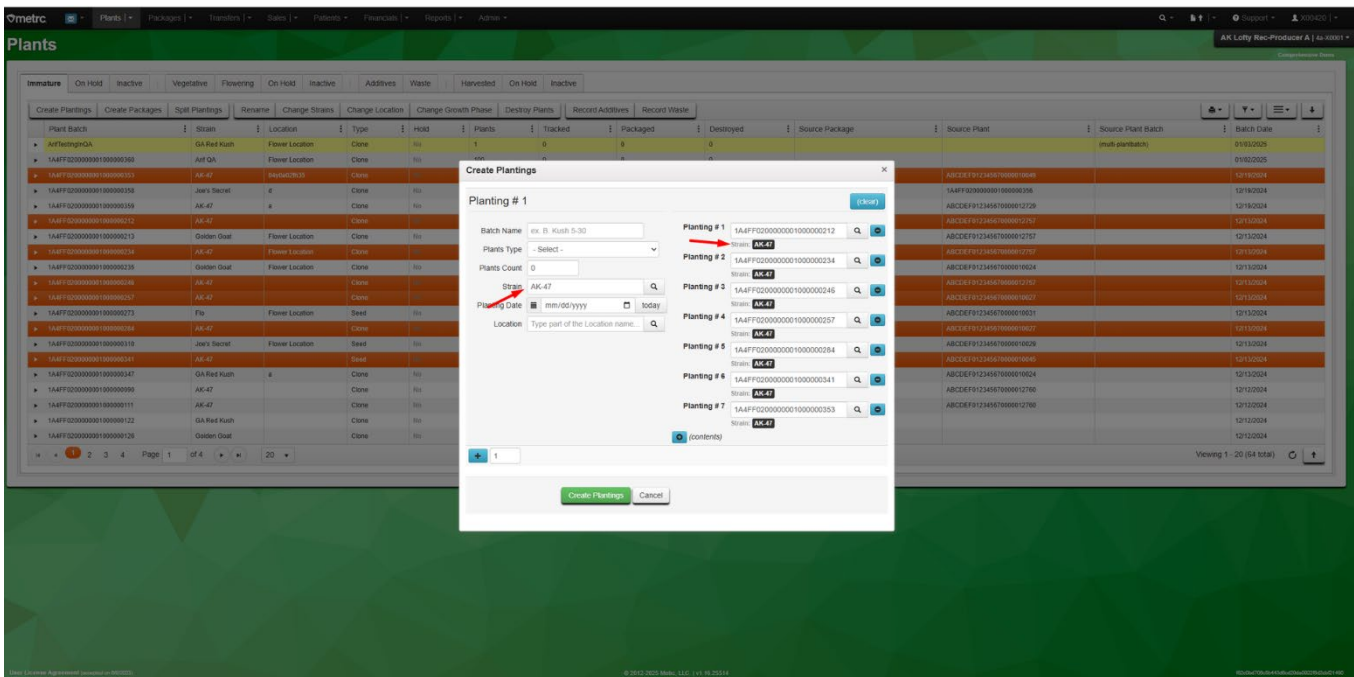


Figure 1: Create Plantings from multiple Plant Batches

Split Plantings:

Strains will now auto-populate based on the selected plant within the Immature Plants window when the Split Plantings action is being done – see **Figure 2 below**.

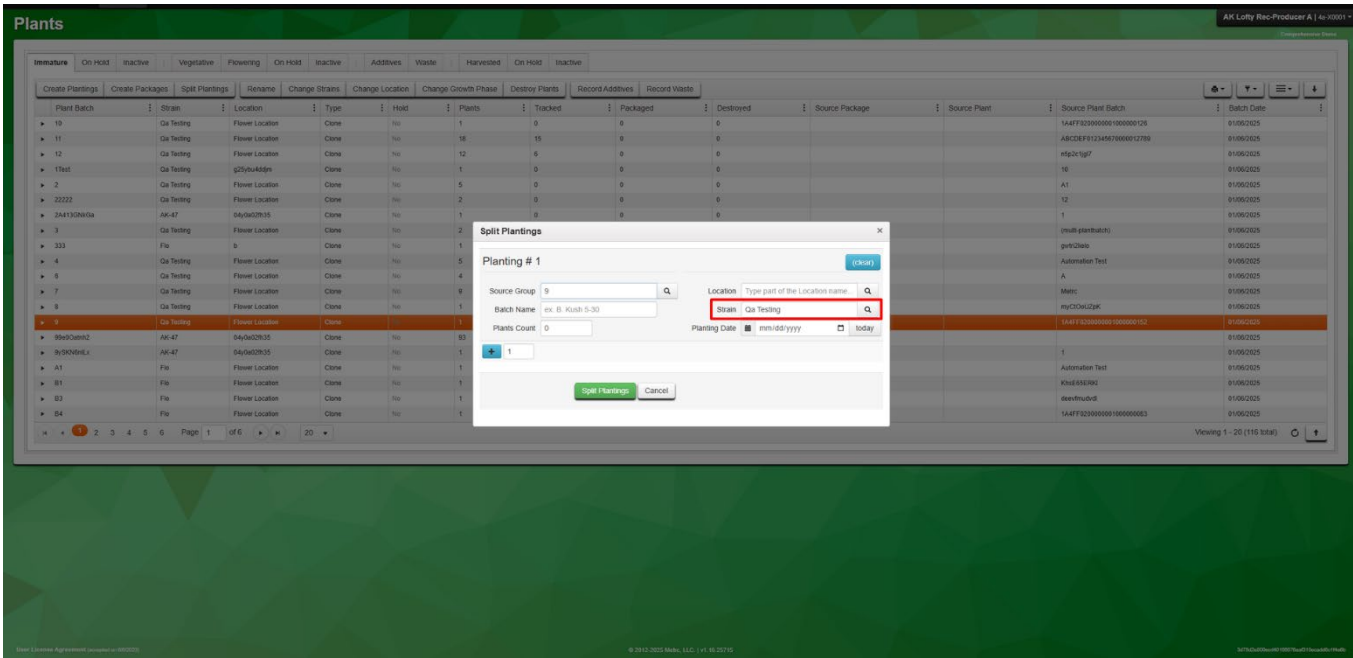


Figure 2: Split Plantings action window with auto-populated Strain

When selecting multiple plant batches of different strains, and no strain data is missing, then the strain information will auto-populate in the Split Plantings action window for each immature planting being split – see Figure 3.

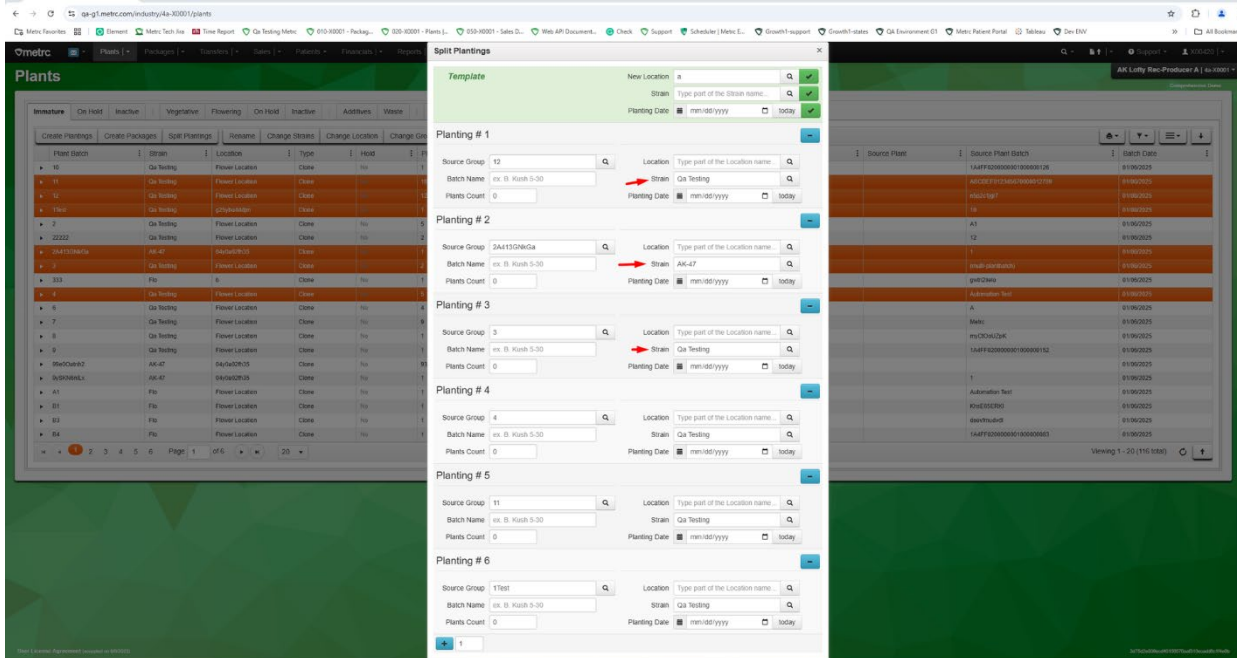


Figure 3: Split Plantings action window with auto-populated Strain

Auto-Fill Strain Field for Plantings

Within the Immature Plants window, the plant selection process has been enhanced to automatically populate the Strain field in the Create Plantings action window – see Figure 4.

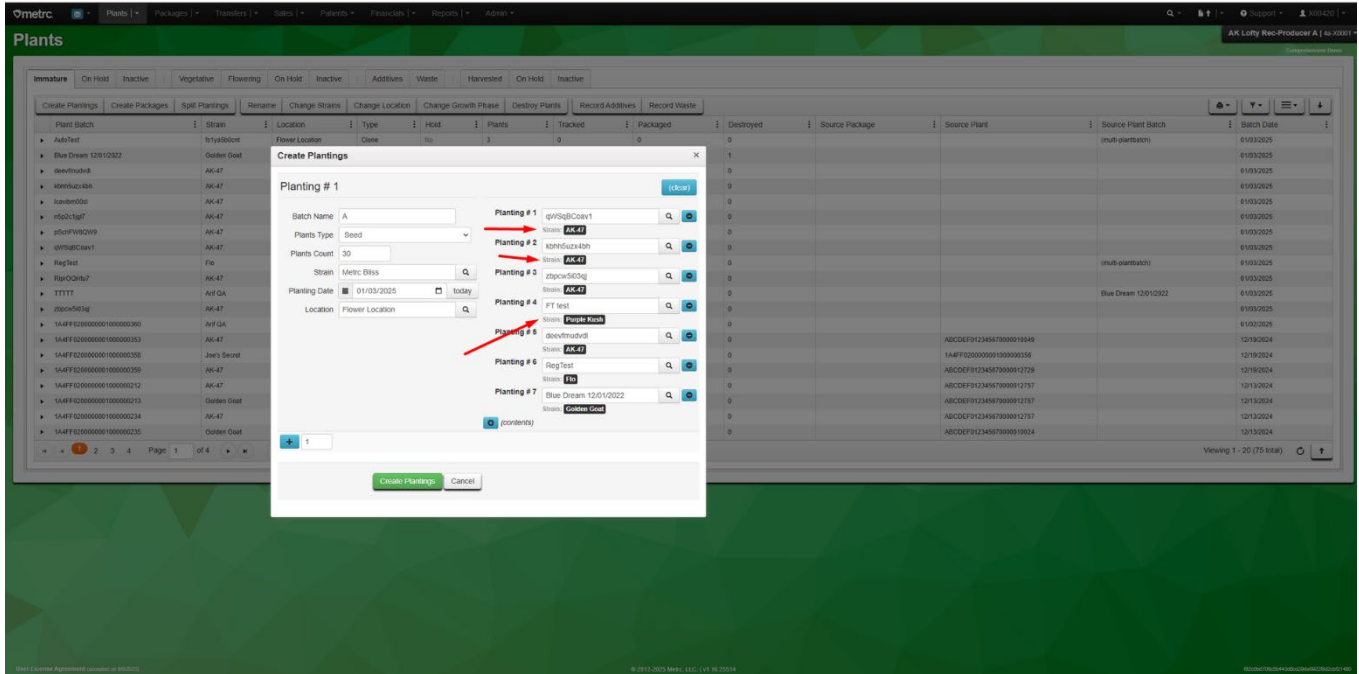


Figure 4: Create Plantings action window

View and Restore Plants in Harvest Details

All plants associated with a Harvest Batch are now viewable through a new "Plants" tab in the Harvested section, which mimics the other plant grids – see Figure 5.

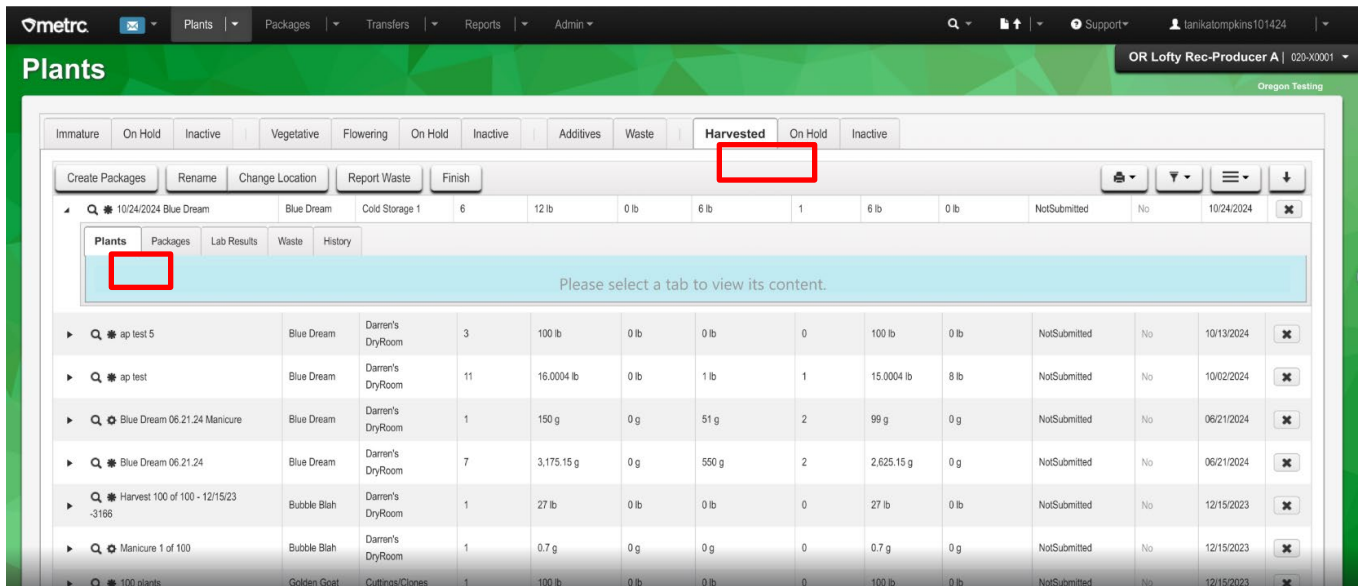


Figure 5: New Plants tab in Harvested section

You can restore individual plants using the "X" in the last column – see **Figure 6**.

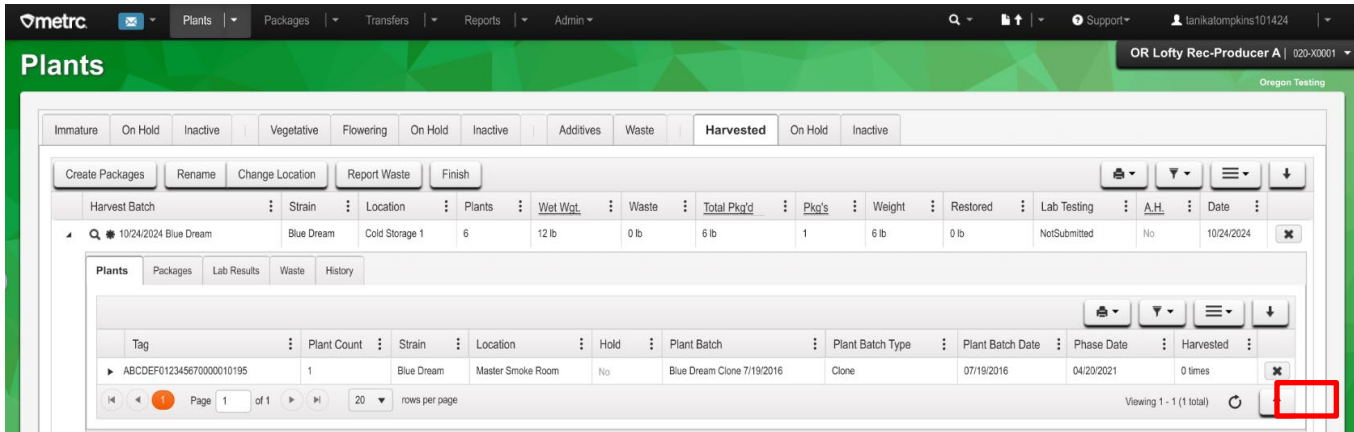


Figure 6: Restore individual Plants button

In addition, you can restore ALL the plants at once by selecting a harvest first, then select the “Restore All” button – see **Figure 7**.

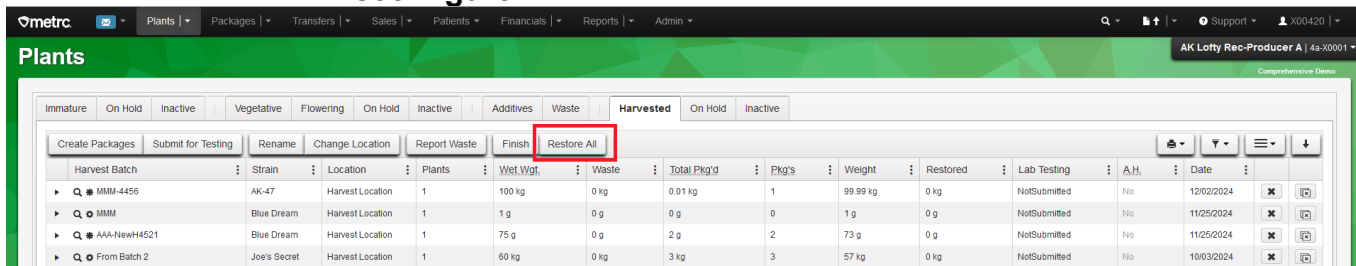


Figure 7: Restore All Plants button

Metrc Resources

If you have any questions, or need additional support, the following resources are available:

Contact Metrc Support

By using the new full-service system by navigating to [Support.Metrc.com](https://support.metrc.com), or from the Metrc System, click Support and navigate to support.metrc.com and it will redirect to the portal.

Please note: If accessing the portal for the first time, a username (which is established when logging in), the respective state and “Facility license number”, and a valid email to set a password are required.

Metrc Learn

Metrc Learn has been redesigned to provide users with interactive, educational information on system functionality to expand skillsets and drive workflow efficiencies.

Metric Support Bulletin



Accessing the new [Metric Learn](#) LMS is simple through multiple convenient locations:

From within the Metric system

Navigate to the Support area on the navigational toolbar and select “Sign up for Training” to register.

Access additional resources

In the Metric system, click on the Metric Expert widget icon and search for the appropriate topic or type in a question.

Thank you for your continued partnership.