

<b>Bulletin Number:</b> OR_IB_0058	<b>Distribution Date:</b> 02/18/2025	<b>Effective Date:</b> 02/11/2025
<b>Contact Point:</b> Metrc Support	<b>Subject:</b> New Cultivation Enhancements	
<b>Reason:</b> To inform and provide an update regarding system enhancements for Cultivators.		

Greetings,

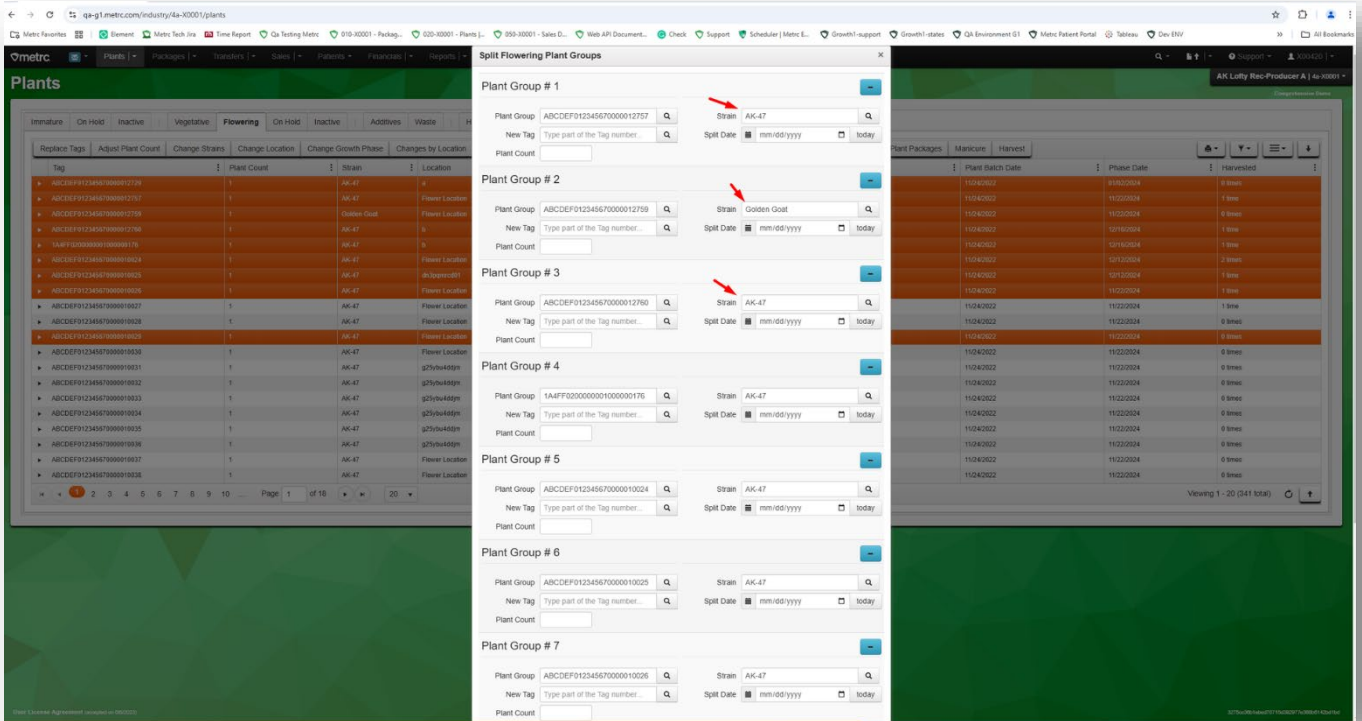
To further streamline workflow processes and reduce manual entry errors for Cultivators, the following functionality enhancements are now available in the Metrc system.

- Auto-populate Strain field during Plant Group split
- Auto-populate Strain field for Split Plant Groups in Vegetative grid
- Improved Immature Plants functionality
- Auto-fill Strain field for Plantings
- View and restore plants within Harvest Details

Please read on for more information on how these new enhancements will drive improved accuracy and efficiency.

## Auto-Populate Strain Field During Plant Group Split

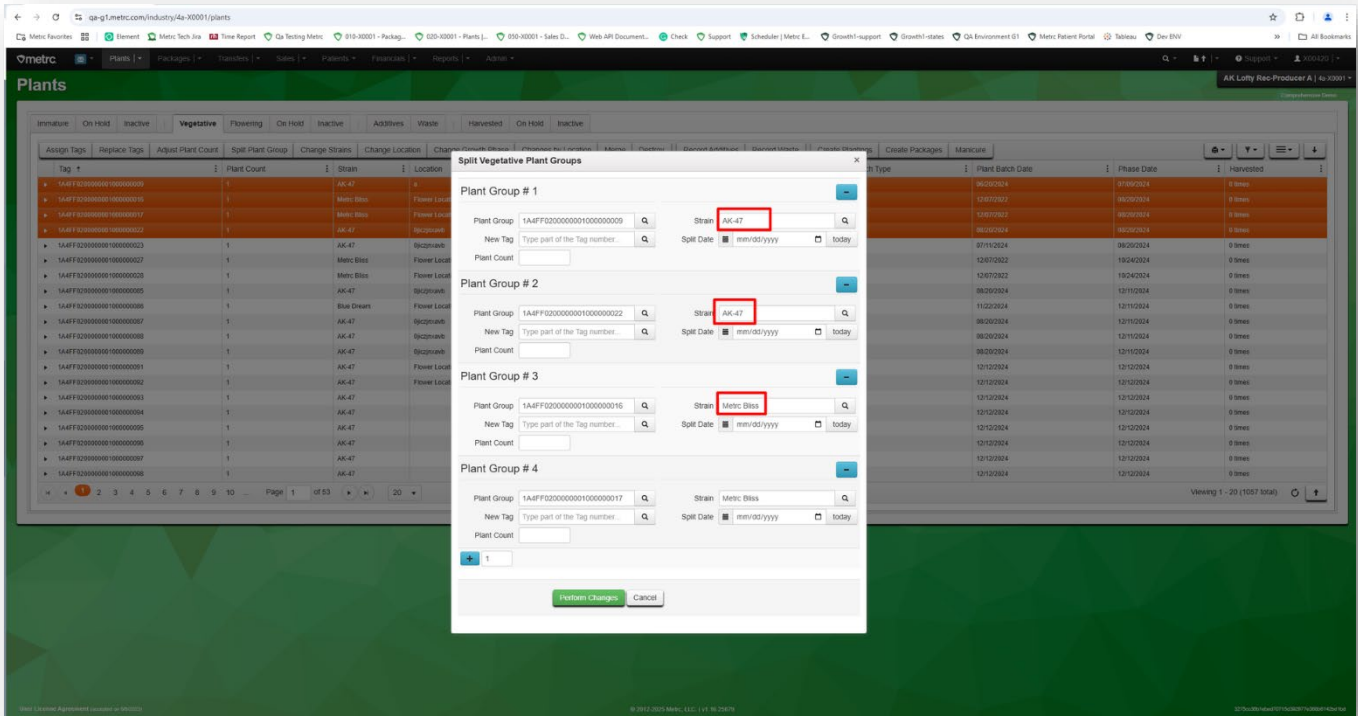
When performing the Split Flowering Plant Groups action in the Flowering grid, the Strain field will now auto-populate based on the selected plant – see **Figure 1**.



**Figure 1: Strain auto-populates in Split Flowering Plant Groups grid**

## Auto-Populate Strain Field for Split Plant Groups in Vegetative Grid

In addition, the system will now automatically populate the Strain field when performing the Split Plant Group action in the Vegetative Grid – see Figure 2.

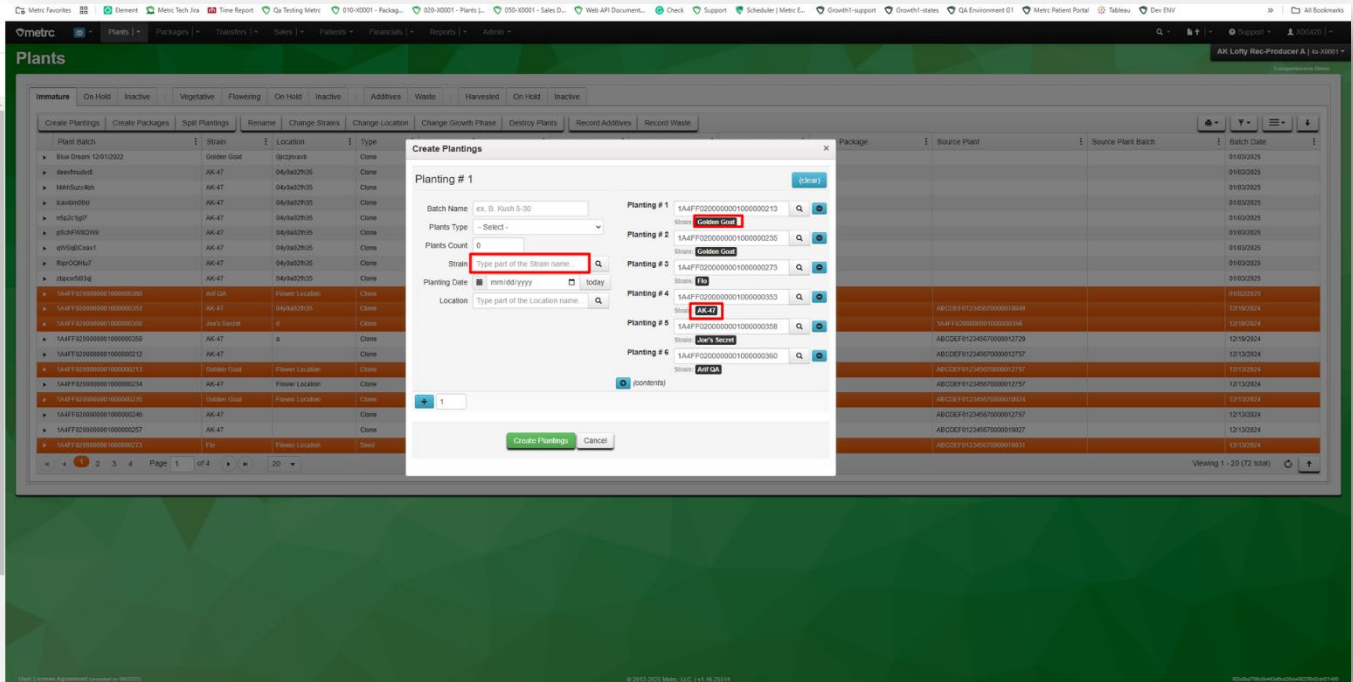


**Figure 2: Strain auto-populates in Split Vegetative Plant Groups grid**

## Improved Immature Plants Functionality

### Create Plantings:

For multi-strain selections or where strain data is missing when selecting multiple plant batches, the strain field will remain blank, allowing users to manually assign the appropriate strain. Users retain the flexibility to override the auto-populated strain as needed, enhancing control and customization – see **Figure 3**.



**Figure 3: Create multi-strain Plantings – no auto-population**

When selecting multiple plant batches of the same strain, the strain will auto-populate in the Create Plantings action window – see **Figure 4** below.

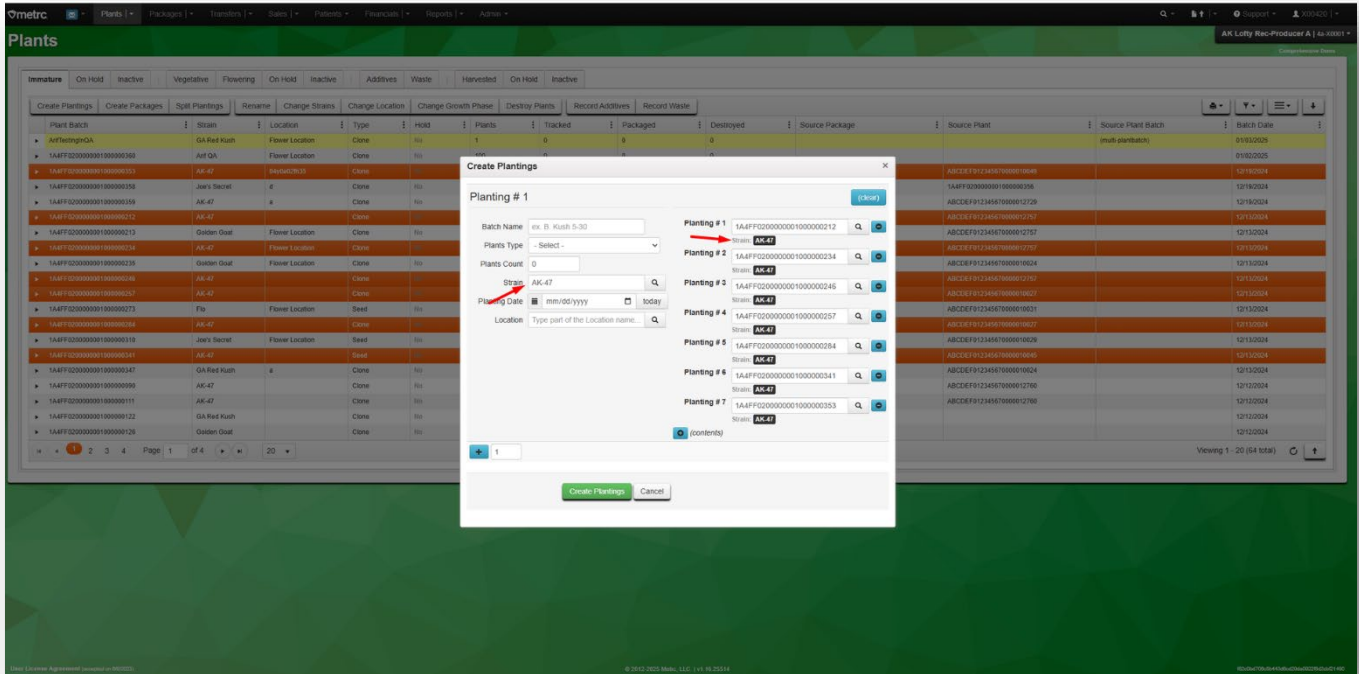
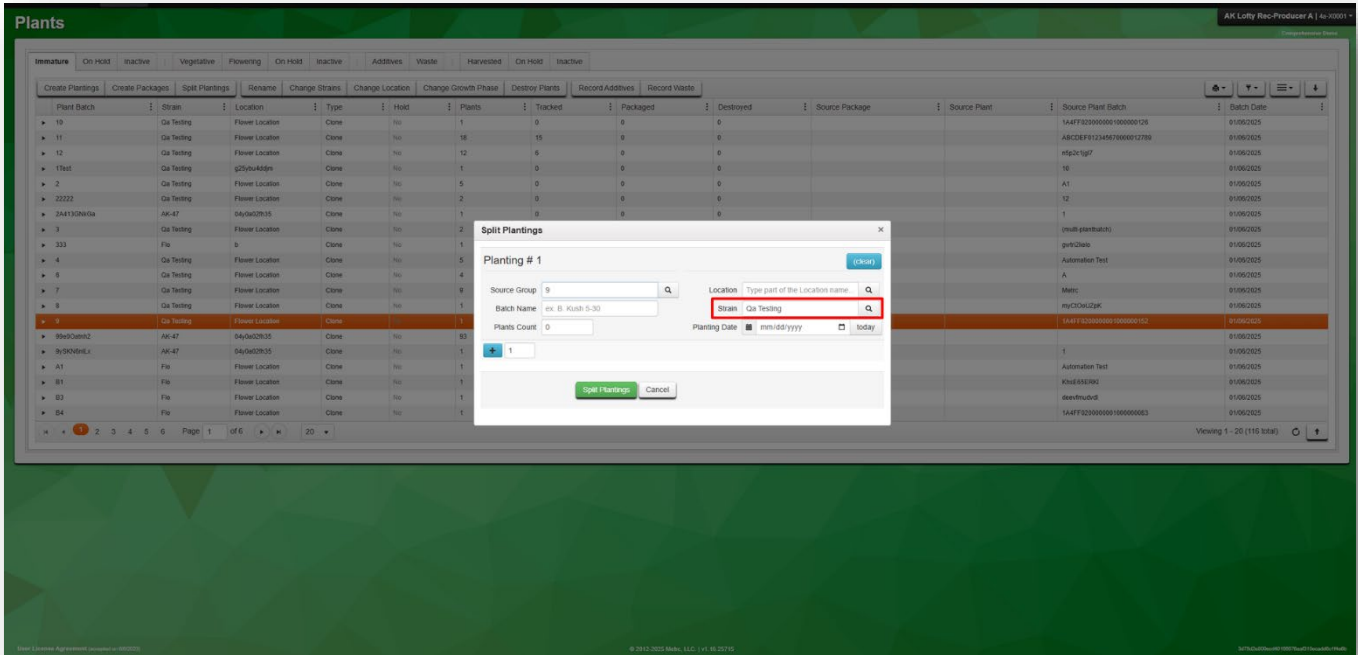


Figure 4: Create Same Strain Plantings from multiple Plant Batches

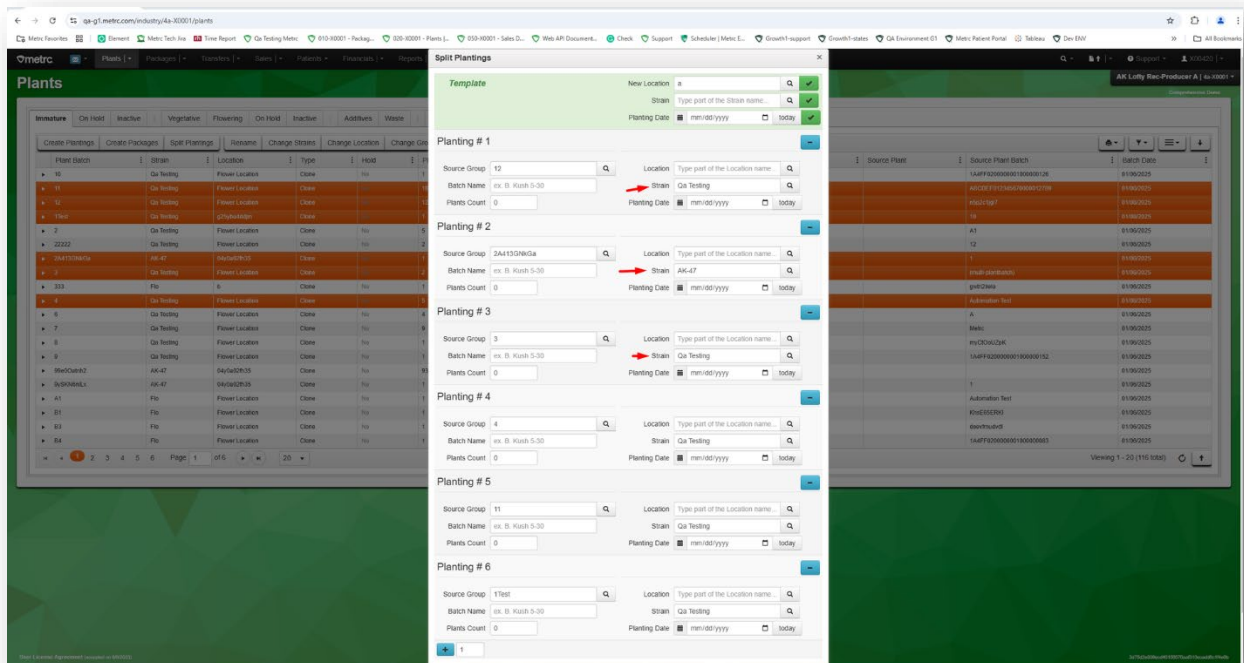
## Split Plantings:

Strains will now auto-populate based on the selected plant within the Immature Plants window when the Split Plantings action is being done – see Figure 5 below.



**Figure 5: Split Plantings action window with auto-populated Strain**

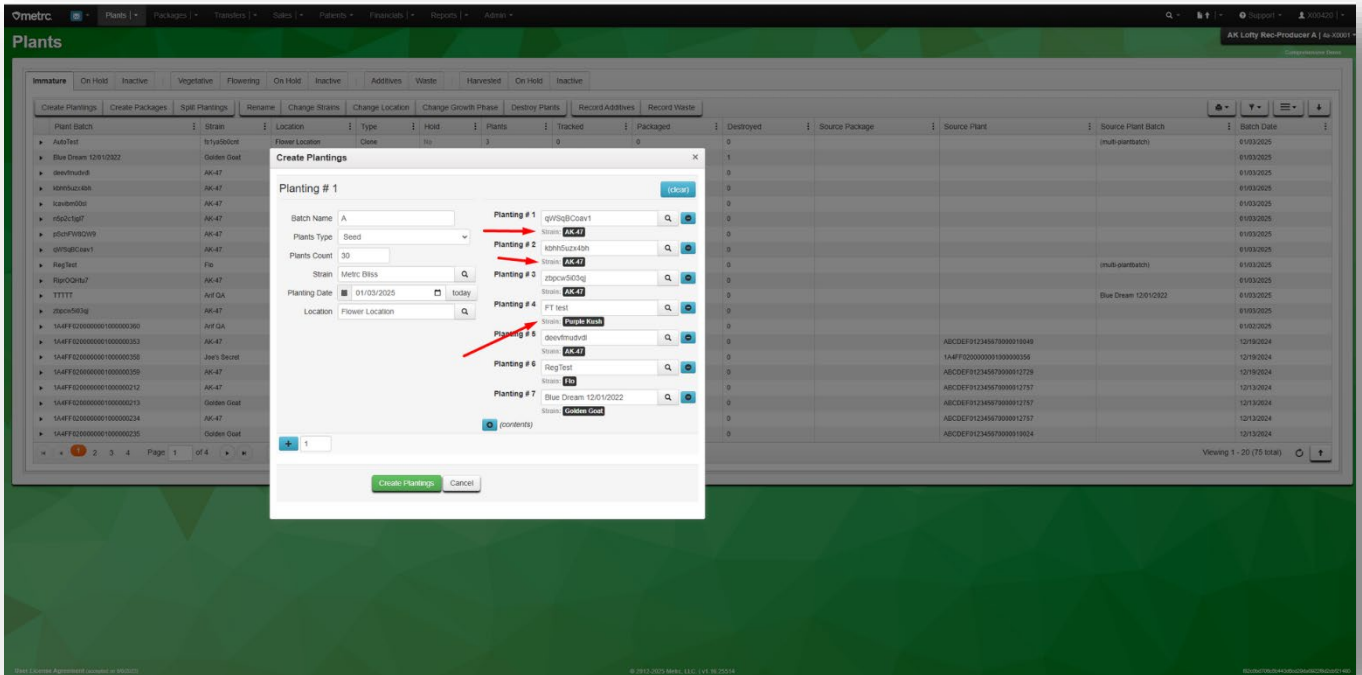
When selecting multiple plant batches of different strains, and no strain data is missing, then the strain information will auto-populate in the Split Plantings action window for each immature planting being split – see Figure 6.



**Figure 6: Split Plantings action window with auto-populated Strain**

## Auto-Fill Strain Field for Plantings

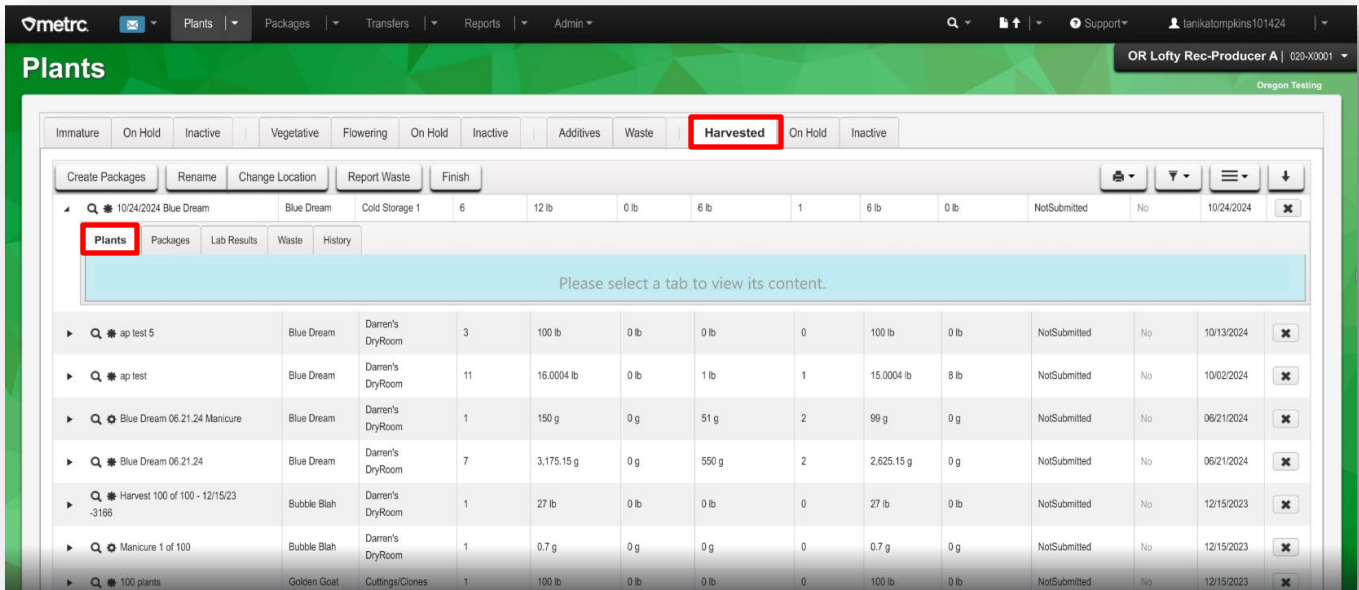
Within the Immature Plants window, the plant selection process has been enhanced to automatically populate the Strain field in the Create Plantings action window – see **Figure 7**.



**Figure 7: Create Plantings action window**

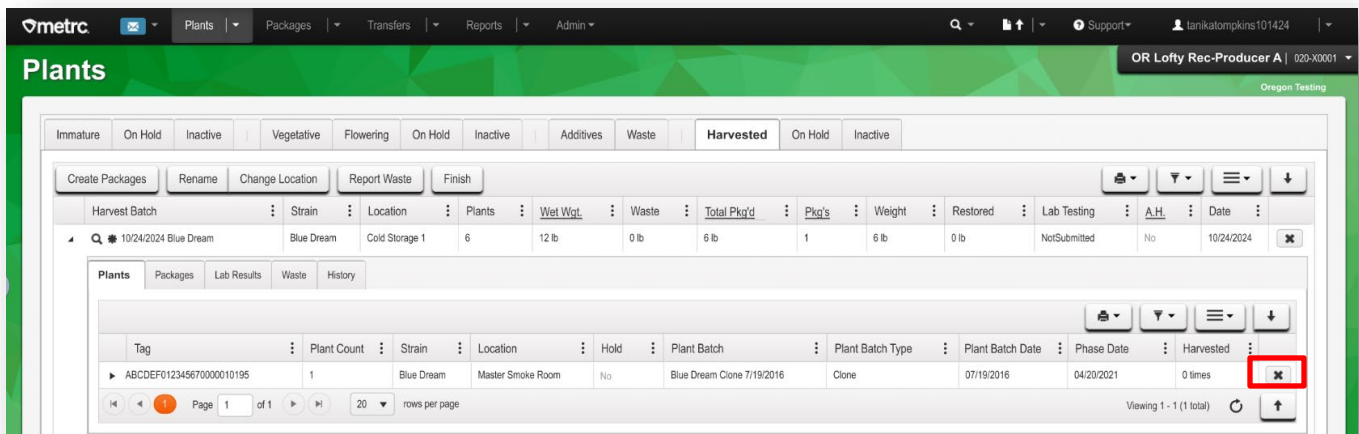
## View and Restore Plants in Harvest Details

All plants associated with a Harvest Batch are now viewable through a new "Plants" tab in the Harvested section, which mimics the other plant grids – see **Figure 8**.



**Figure 8: New Plants tab in Harvested section**

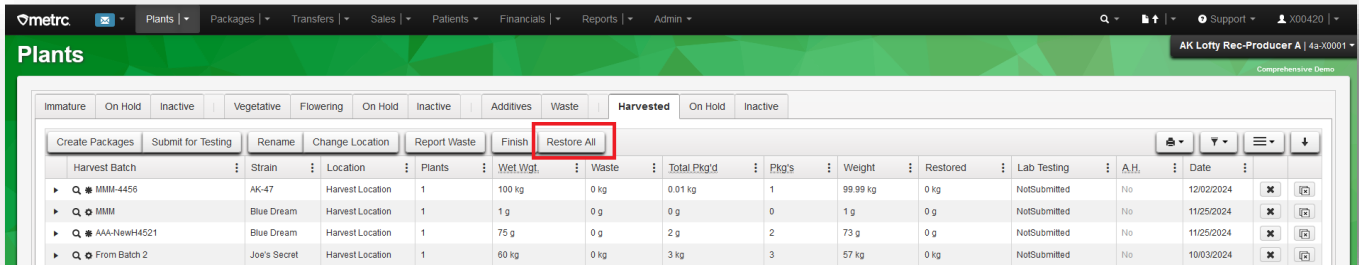
You can restore individual plants using the "X" in the last column – see **Figure 9**.



**Figure 9: Restore individual Plants button**



In addition, you can restore ALL the plants at once by selecting a harvest first, then select the “Restore All” button – see **Figure 10**.



**Figure 10: Restore All Plants button**

## Metrc Resources

If you have any questions, or need additional support, the following resources are available:

### Contact Metrc Support

By using the new full-service system by navigating to [Support.Metrc.com](https://Support.Metrc.com), or from the Metrc System, click Support and navigate to support.metrc.com and it will redirect to the portal.

*Please note:* If accessing the portal for the first time, a username (which is established when logging in), the respective state and “Facility license number”, and a valid email to set a password are required.

### Metrc Learn

Metrc Learn has been redesigned to provide users with interactive, educational information on system functionality to expand skillsets and drive workflow efficiencies.

Accessing the new [Metrc Learn](#) LMS is simple through multiple convenient locations:

#### **From within the Metrc system**

Navigate to the Support area on the navigational toolbar and select “Sign up for Training” to register.

#### **Access additional resources**

In the Metrc system, click on the Metrc Expert widget icon and search for the appropriate topic or type in a question.

Thank you for your continued partnership.